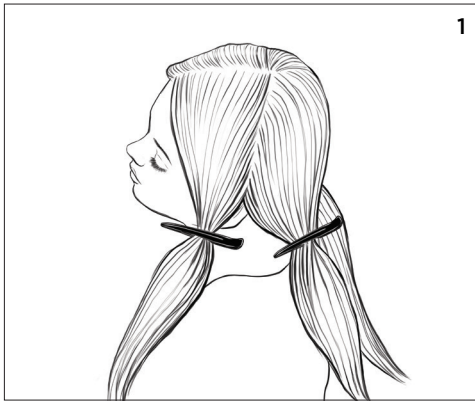


# WHERE DARK MEETS THE LIGHT

Balayage Technique for Transitioning to Gray Hair

## BALAYAGE

At the line of demarcation between the previously colored hair and the new growth, use a balayage highlighting technique to visually soften and blend the two sections together.



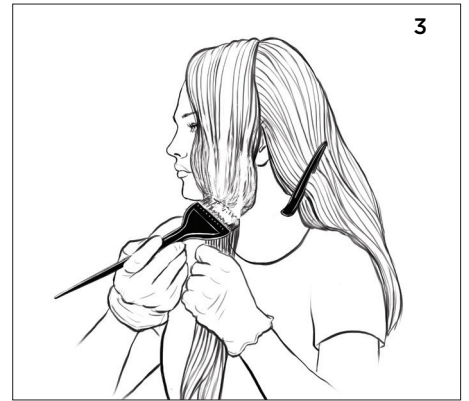
### STEP 1

- Section your hair into 4 sections by splitting your hair down the middle and then splitting from the top of one ear to the top of the other ear.
- Secure each section with a clip.



### STEP 2

- Unclip one of the front sections.
- Lightly backcomb this section where you will start applying your lightener Formula. This will avoid creating a distinct line of demarcation.
- Begin applying your Formula with the lower strength developer leaving out the last 2 to 3 inches of hair.
- Apply your second lightener Formula with the higher strength developer on the last 2 to 3 inches of hair. Make sure to evenly saturate for best results.



### STEP 3

- Continue this application on the other 3 sections and process for up to 45 minutes at room temperature.
- Check the results every 10 minutes and shampoo once the desired level of lightness is reached.



### EXPERT TIP

*We're here to help. Our YouTube channel is a great resource to learn how to successfully balayage or highlight hair.*



SUBSCRIBE

[youtube.com/clairolprofessional](https://www.youtube.com/clairolprofessional)